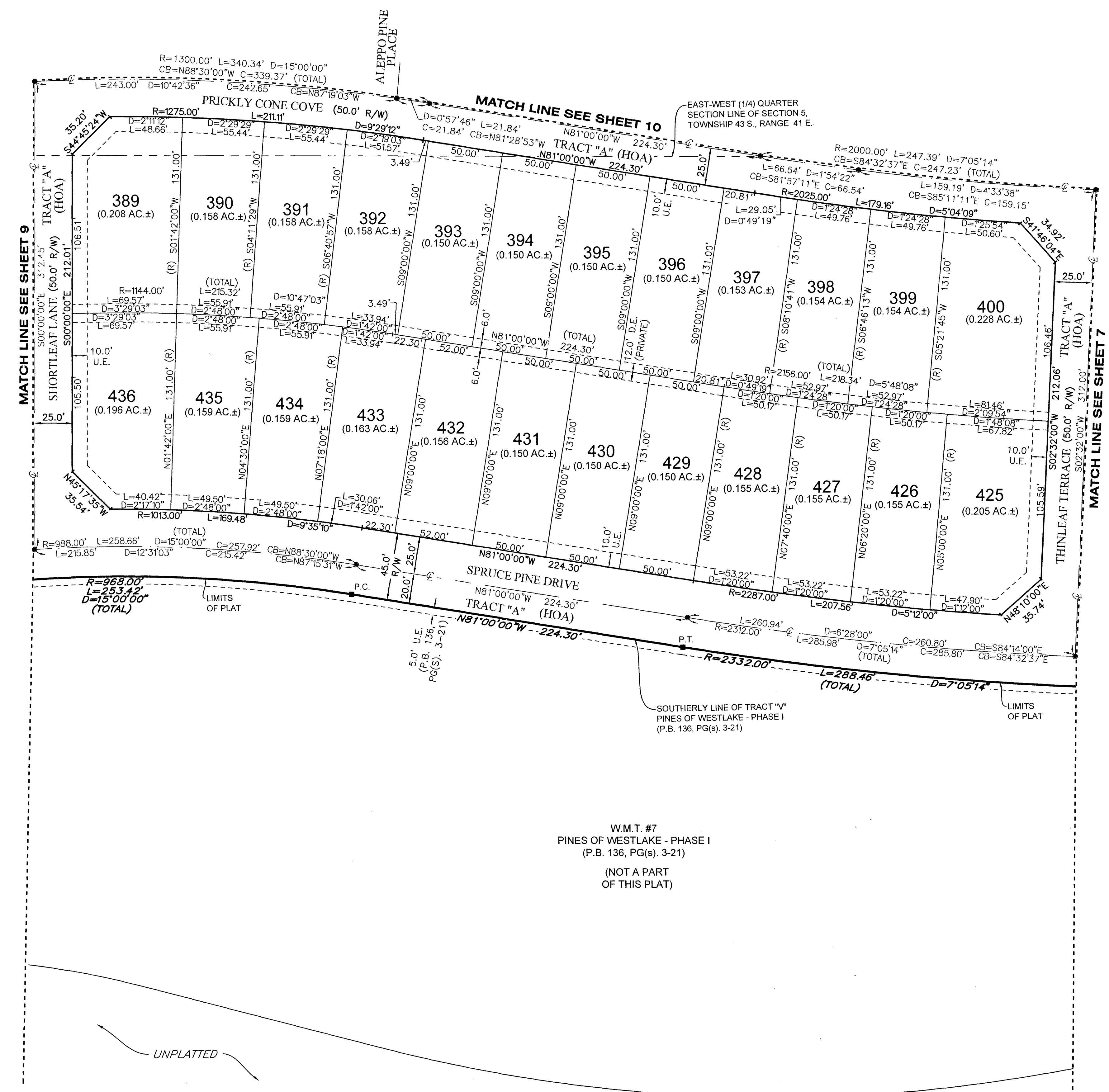
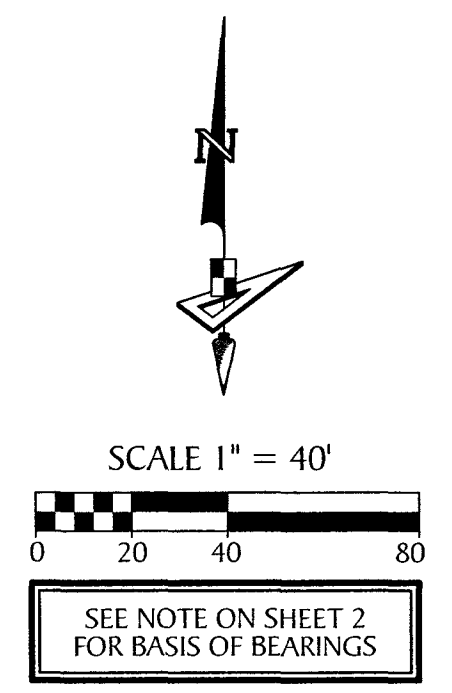
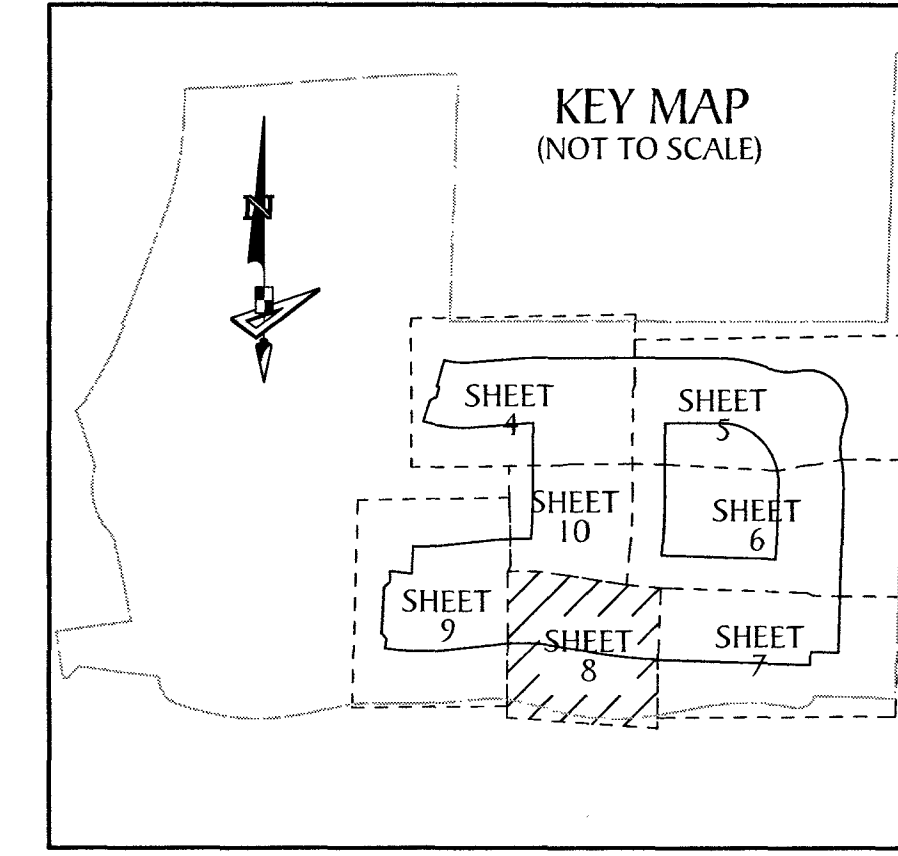


PINES OF WESTLAKE - PHASE II

A SUBDIVISION IN SECTION 5, TOWNSHIP 43 SOUTH, RANGE 41 EAST, CITY OF WESTLAKE,
PALM BEACH COUNTY, FLORIDA, BEING A REPLAT OF TRACT "V", PINES OF WESTLAKE - PHASE I,
PLAT BOOK 136, PAGES 3 THROUGH 21, INCLUSIVE, PUBLIC RECORDS OF PALM BEACH COUNTY, FLORIDA.



LEGEND

P.O.B. -----	POINT OF BEGINNING
P.O.C. -----	POINT OF COMMENCEMENT
P.B. -----	PLAT BOOK
D.B. -----	DEED BOOK
O.R./O.R.B. -----	OFFICIAL RECORDS BOOK
PG./PG(S) -----	PAGE(S)
NAD -----	NORTH AMERICAN DATUM
W.M.T. -----	WATER MANAGEMENT TRACT
O.S.T. -----	OPEN SPACE TRACT
P.B.C. -----	PALM BEACH COUNTY
U.E. -----	UTILITY EASEMENT
D.E. -----	DRAINAGE EASEMENT
L.M.A.E. -----	LAKE MAINTENANCE ACCESS EASEMENT
5-43-41 -----	SECTION-TOWNSHIP-RANGE
R -----	RADIUS
L -----	ARC LENGTH
D -----	DELTA ANGLE
CB -----	CHORD BEARING
C -----	CHORD
N.T.I. -----	NON-TANGENT INTERSECTION
N.T.C. -----	NON-TANGENT CURVATURE
P.C. -----	POINT OF CURVATURE
P.T. -----	POINT OF TANGENCY
C.C. -----	COMPOUND CURVATURE
R.C. -----	REVERSE CURVATURE
R.I. -----	RADIAL INTERSECTION
R/W -----	RIGHT-OF-WAY
(R) -----	RADIAL
(NR) -----	NON-RADIAL
HOA -----	HOMEOWNERS ASSOCIATION
S.I.D. -----	SEMINOLE IMPROVEMENT DISTRICT
PRM -----	PERMANENT REFERENCE MONUMENT
● -----	PERMANENT CONTROL POINT
□ -----	FOUND PERMANENT REFERENCE MONUMENT
■ -----	SET 4"x4" CONCRETE MONUMENT WITH 2" ALUMINUM DISK STAMPED "PRM LB 7768"